



ALDO ALESSIO REGATTA

St. Francis Yacht Club

August 22-24, 2014

SAILING INSTRUCTIONS

1 RULES

- 1.1 The regatta will be governed by the rules as defined in *The Racing Rules of Sailing* (RRS) and the Aldo Alessio Perpetual Deed of Gift.
- 1.2 RRS 40 is changed as follows: Competitors shall wear personal flotation devices while racing, except when below deck or briefly while changing or adjusting clothing or personal equipment.
- 1.3 Ocean Racing Rule (ORR) in effect as of August 1, 2014:
<http://www.offshoreracingrule.org/orr-rule/rulebook>.
- 1.4 High Performance Rule (HPR) in effect as of August 1, 2014: <http://www.hprsailing.org/>.
- 1.5 The NC-PHRF Rules & Guidelines will apply:
http://www.yra.org/PHRF/docs/ncphrf_rules_and_guidelines.pdf. The NC-PHRF Handicap Division will be scored based on Time-on-Time calculation.
- 1.6 Appendix T, Section A, T1 shall apply as follows: the first two sentences of RRS 44.1 are changed to: A boat may take a One-Turn Penalty when she may have broken a rule of Part 2 or rule 31 while racing. However, when she may have broken a rule of Part 2 while in the zone around a mark other than the starting mark, her penalty shall be a Two-Turns Penalty.
- 1.7 RRS Appendix T2 Section B, POST RACE PENALTIES applies.
- 1.8 Handicap division boats that fail to supply a rating certificate as required in the NOR and compete in the event shall be scored DSQ by the Race Committee without a hearing. This changes RRS A5.

2 ENTRIES

Eligible boats shall complete registration online (www.stfyc.com) prior to 0930 hours on August 22nd.

3 COMMUNICATION WITH COMPETITORS

- 3.1 A Competitors' Meeting will be held at StFYC on Friday, August 22nd at 0930 hours.
- 3.2 Official Notices will be posted on the Official Regatta Notice Board located in the hallway adjacent to the side (Regatta) entrance of StFYC.
- 3.3 Changes to the Sailing Instructions will be posted by 0945 hours on the day they are to take effect, except any changes to Sailing Instruction 4, Number & Schedule of Races, will be posted by 1900 hours on the day before they take effect.
- 3.4 Signals made ashore will be displayed from the flagpole located on the StFYC Race Deck.
- 3.5 When flag AP is displayed ashore, '1 minute' is replaced with 'not less than 30 minutes' in the race signal AP. This changes RRS Race Signals.
- 3.6 Questions regarding the Sailing Instructions may be submitted in writing to the Race Committee. Questions and written responses will be posted on the Official Regatta Notice Board.
- 3.7 Race Committee communications with competitors will take place on VHF channel 69.
- 3.8 Oral changes to the Sailing Instructions may be made on the water. A change is in effect when the RC signal boat displays code flag L over A with one sound signal. This means "come within hail" of the RC Signal Boat to receive oral changes to the Sailing Instructions. The Race Committee may give oral changes to the Sailing Instructions to each boat by VHF or loud hailer and require acknowledgement.

4 NUMBER & SCHEDULE OF RACES

For all classes, five races are scheduled in the series as follows:

<u>RACE</u>	<u>DAY & DATE</u>	<u>TIME OF FIRST WARNING SIGNAL</u>
1	Friday, August 22 nd	1100 hours
2	Saturday, August 23 rd	1100 hours
3	Saturday, August 23 rd	Immediately following Race 2
4	Saturday, August 23 rd	Immediately following Race 3
5	Sunday, August 24 th	1100 hours

5 RACING AREA

The intended racing area will be the Central San Francisco Bay and its approaches.

6 COURSES & MARKS

6.1 The courses and marks are described in Attachments A – Official Description of Marks and Courses.

6.2 No later than the Warning Signal, a placard designating the course will be displayed from the Signal Boat.

6.3 For Courses 10 - 14: no later than the Warning Signal, a flag designating the mark rounding direction will be displayed from the Signal Boat. If a red flag is displayed, all marks except for marks 3g and 3Tg shall be rounded to port. If a green flag is displayed, all marks except for marks 3g and 3Tg shall be rounded to starboard.

6.4 Marks 3g and 4g will be a gate. In the event one of the gate marks is not in place, the remaining mark shall be left to the same side as the previous mark.

6.5 New marks, as provided in instruction 10, will be the original mark color with a black band around it. When in a subsequent change of course a new mark will be replaced, it will be replaced with the original mark without the black band.

7 RESTRICTED AREAS

7.1 For safety reasons, each of the lines bounded by the following two points is an obstruction:

a) The northern end of the SF Marina entrance Wave Attenuator and the closest point ashore.

b) The southern end of the SF Marina entrance Wave Attenuator and the closest point ashore.

c) The "H" Beam piling (located approximately 200 yards west of the St. Francis YC) and the closest point ashore.

d) **Anita Rock Light** located approximately 0.30nm West of StFYC ("Anita Rock" Q 20ft 5M), **and a yellow buoy marked "AR"** (located approximately 100 yards northwest of the Anita Rock Light).

e) **Anita Rock Light** located approximately 0.30nm West of StFYC ("Anita Rock" Q 20ft 5M), **and the closest point ashore.**

f) The **yellow buoy marked "AR"** (located approximately 100 yards northwest of Anita Rock Light) **and the closest point ashore.**

g) The Green/Red Bell Buoy off the west end of Alcatraz Island and Alcatraz Island.

h) The South Tower of the Golden Gate Bridge and the closest point ashore.

i) The Green Buoy (G"3") south of Point Blunt-Angel Island and the closest point ashore.

j) The westernmost end of Pier 45 and the easternmost end of the Aquatic Park breakwater.

7.2 Boats are prohibited from sailing across any of these lines while racing.

8 THE START

8.1 The Starting Line will be between a staff displaying an orange and yellow striped flag on the Starting Line Signal Boat and a Red Inflatable cone, OR a staff displaying an orange and yellow striped flag on the pin boat.

8.2 A boat shall not start later than four minutes after her starting signal. A boat that starts later than four minutes after her starting signal shall be scored DNS. This changes RRS 35.

8.3 Class Flags for one-design classes will be a class insignia on a white rectangular background.

8.4 The Class Flag for ORR and PHRF will be a black letter "A" on a white rectangular background.

9 RECALLS

The Race Committee may hail the sail number(s) of the boat(s) identified on the course side of the starting line at the starting signal. The failure of a hail, the failure of a boat hearing the hail or the order of the hails shall not be grounds for redress. This changes RRS 62.1(a).

10 CHANGE OF COURSE AFTER THE START

To change the next leg of the course, the race committee will lay a new mark (or move the finishing line) and remove the original mark as soon as practicable. When in a subsequent change a new mark is replaced, it will be replaced by an original mark.

11 THE FINISH

11.1 For race courses with "RD" finishing line will be between StFYC outer mark "A" and a yellow placard on the StFYC Race Deck (RD). StFYC inner mark "B" must be left to the south.

11.2 For Saturday and Sunday race courses with "UW" upwind finishes, the finishing line will be between a staff displaying an orange and yellow striped flag on a Race Committee boat and an orange buoy located approximately 200 yards upwind of Mark 1.

11.3 For race courses with "DW" downwind finishes, the finishing line will be between a staff displaying an orange and yellow striped flag on the Starting Line Signal Boat and an orange buoy, opposite the starting line.

12 TIME LIMIT

12.1 For races conducted on Saturday and Sunday, boats failing to finish within 60 minutes after the first boat in her class sails the course and finishes will be scored Did Not Finish (DNF) without a hearing. This changes rules 35, A4 and A5.

12.2 The time limit for the races on Friday and Sunday is 5 hours.

12.3 The time limit for each race on Saturday is 2 hours.

13 COMMERCIAL TRAFFIC, SAFETY

13.1 As stated in the RRS preamble to the Part 2 rules, when a boat sailing under these rules meets a vessel that is not, she shall comply with the International Regulations for Preventing Collisions at Sea (IRPCAS) or government right-of-way rules. This supplements, but does not replace the rules of Part 2.

13.2 If a commercial vessel has sounded five blasts, and/or the vessel or the Coast Guard identifies an offending boat, the Race Committee shall protest the boat, in which case the Protest Committee shall assume that the identified boat has impeded passage or violated the U.S. Inland Navigation Rules, and the identified boat shall have the burden of proving otherwise. In the case of a complaint by a Vessel Traffic or the Coast Guard, the protest time limit shall be extended up to two days after the conclusion of the regatta. This changes RRS 60.2(a) and 61.3.

13.3 A Race Committee boat may signal a boat to alter course to avoid impeding the passage of commercial vessels by making a sound signal (horn or whistle) and pointing Code Flag V at the boat. The signaled boat shall promptly comply with the signal unless compliance would create an unsafe condition. If a boat fails to comply with such a signal, the Race Committee shall protest the boat, in which case the Protest Committee shall assume that the course alteration would not have created an unsafe condition, and the protested boat shall have the burden of proving otherwise.

13.4 Boats may not take a penalty under rule 44 for breaking any part of this SI, and a resulting disqualification shall not be excludable under rule A2. The StFYC shall cooperate with and provide relevant information to the Coast Guard or other governmental authority regarding investigations of boats impeding ship traffic or violating U.S. Inland Navigation Rules (33 CFR 83).

14 PROTESTS

14.1 Protests and requests for redress may be written on Standard US SAILING Protest Forms. Protest Forms and After Race Scoring Penalty forms are available at the St. Francis Yacht Club Jury Desk. This changes RRS 61.2.

14.2 Protest filing times will be posted on the Official Regatta Notice Board. The time, place and parties to all protest and redress hearings will be posted on the Official Regatta Notice Board within 30 minutes of the

filing times listed above. This shall serve as notification per RRS 63.2.

- 14.3** For protests or requests for redress borne from race 1 or otherwise intended to be filed on Friday, forms must be submitted to a Race Committee member within two hours after the first boat in her class sails the course and finishes.
- 14.4** Any protests or requests for redress filed for race 1 will be scheduled to be heard after racing on Saturday, August 23rd.
- 14.5** For protests or requests for redress borne from races 2,3,4 or 5, forms must be submitted to a Protest Committee member at the Jury Desk within 90 minutes after the first boat in her class sails the course and finishes.
- 14.6** A request to reopen a hearing on the last day of racing must be delivered to the Front Desk of the St. Francis Yacht Club within 60 minutes of the announcement of the Protest Committee's decision (oral or written). This changes RRS 66.

15 SCORING

- 15.1** One race must be completed to constitute a series.
- 15.2** Each boat's score will be the sum of her scores for all races. This changes RRS A2.
- 15.3** Boats sailing under ORR will be scored using Time on Time All Purpose.
- 15.4** Boats sailing under PHRF will be scored using Time on Time.

16 DISPOSAL OF WASTE OR TRASH

Boats observed breaking RRS 55 are subject to protest only by the Race Committee or Protest Committee. The penalty for a breach of this rule, which may include disqualification from a race, is at the discretion of the Protest Committee. Discarding elastic or fiber bands or ties when setting a sail is permitted. This changes RRS 55, 60.1(a) and 64.1.

17 PRIZES

Trophies will be awarded based upon participation.

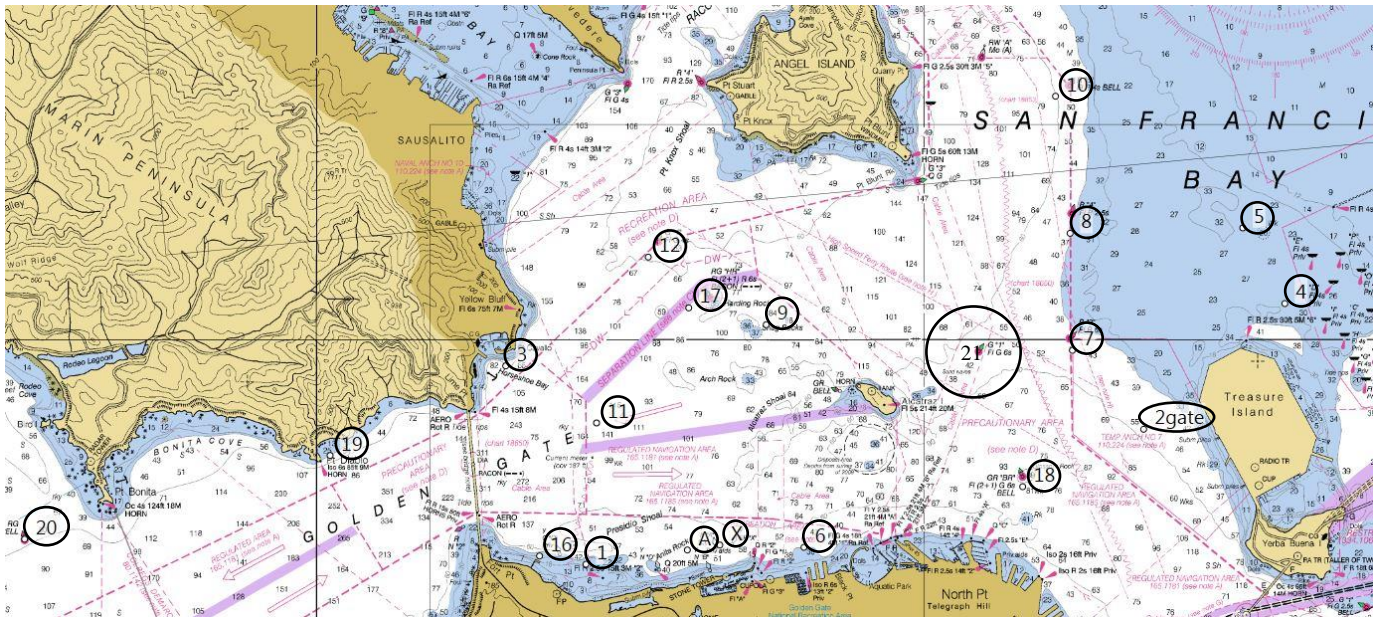
ATTACHMENT A
OFFICIAL DESCRIPTION OF MARKS AND COURSES

MARK	DESCRIPTION
A	Outer Yellow sphere "A" approx. 400 yards north of StFYC Race Deck
B	Inner Yellow Sphere "B" (Bellingham) approx. 50 yards north of StFYC Race Deck
ALZ	Alcatraz Island
X	Yellow/Blue sphere set approx.. 400 yards North of the Golden Gate Yacht Club
1	Inflatable yellow buoy set as a Windward Mark
1o	Inflatable red buoy set as an Offset Mark to be rounded in the same direction as Mark "1"
3	Yellow inflatable cone set approx. 300 yards south of Point Cavallo
3g	Two inflatable Yellow buoys set as a Leeward Gate (located approximately 300 yards upwind of the Starting Line) (If one mark is missing, the remaining mark shall be rounded in the same direction as the previous mark)
4g	Two Inflatable Red buoys set as a Leeward Gate (set @ .7NM at 40 degrees MAG from #18-Green/Red "BR" FI Bell at Blossom Rock) (If one mark is missing, the remaining mark shall be rounded in the same direction as the previous mark)
7	Red "2" FI R 6s (West of Northern end of Treasure Island)
8	Red "4" FI R 4 sec. Horn, 1.0 NM East of Point Blunt
16	Yellow Can "TB" (Tom Blackaller) .2 NM East of Fort Point
17	Green/Red "HR" 1 Qk FI R at Harding Rock
18	Green/Red "BR" FI Bell at Blossom Rock
19	Yellow inflatable approx. 0.18NM @ 065° M from Pt. Diablo Light
20	Red/Green FI(2+1) R6s Bell (ocn) 0.60NM SW of Point Bonita
21	Green "1" FI G 6s east of Alcatraz (0.70NM @ 047°M from Alcatraz Light FI 5s 214ft 20M)

COURSE	ROUNDING ORDER p = round to port s = round to starboard
1	Start → 20p → 21s → 16p → 18p → 16p → Finish Line RD
2	Start → 20p → 8p → 17p → 18s → 16p → Finish Line RD
3	Start → 20p → 7p → 20p → Finish Line RD
4	Start → 20p → 16p → 17s → 18 s → 16p → Finish Line RD

5	Start → 20p → Ap → 20p → 17s → ALZ(p) → 8p → 16p → Finish Line RD
6	Start → 20p → 8p → 20p → 7p → 16p → Finish Line RD
7	Start → 20p → 21p → 20p → 17s → 18s → 16p → Finish Line RD
8	Start → 20p → 17s → ALZ(p) → 21p → 3p → Xp → 21p → 16p → Finish Line RD
9	Start → 19p → 17s → ALZ(p) → 21p → 3p → Xp → 21p → 16p → Finish Line RD
10*	Start → 1 → 1o → 3g → 1 → 1o → Finish DW
11*	Start → 1 → 1o → 3g → 1 → 1o → 3gate → Finish UW
12*	Start → 1 → 1o → 3g → 1 → 1o → 3g → 1 → 1o → Finish DW
13*	Start → 1 → 1o → 4g → 1 → 1o → Finish Line DW
14*	Start → 1 → 1o → 4g → 1 → 1o → 4g → 1 → 1o → Finish Line DW
	* Reference Sailing instruction 6.3 for rounding direction

MARK LOCATIONS



This chart is for visual reference only
See Official Descriptions of Marks for location